



# Faculty of Health & Science

Your induction guide for 2017



## 'Ask Me'

If you are lost just ask any member of staff or students with 'Ask Me' T-Shirts for directions. We are here to help you.

# Congratulations

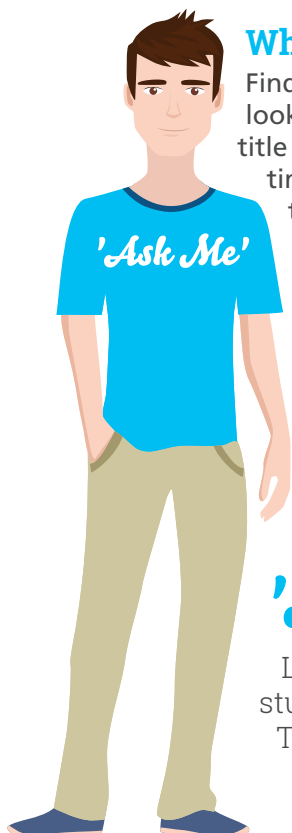
Congratulations on your offer of a place in Athlone Institute of Technology. We are delighted you have chosen to study here and are looking forward to meeting you! This booklet is part of your essential toolkit for your first day

in AIT so make sure to **BRING IT WITH YOU** to your **NEW STUDENT INDUCTION**.

**See you soon,  
Sarah La Cumbre  
Head of Student Resources**

## Free Stuff

Top up your new AIT Card before Sept 23rd and we will add €1.00 to your balance, completely free!



### Where do I go?

Find your group by looking for your course title at the top of the timetable, and follow the timetable directly underneath for that group. Each timetabled activity has a number corresponding to a location on the MAP for each element of Induction.

### 'Ask Me'

Look out for staff or students with 'Ask Me' T-Shirts to help you with any query.

### New Student Induction and AIT Connect

Your New Student Induction day has been tailored to help you with a few essentials, get to know fellow classmates and learn how to find your way around the campus.

Once classes commence, we have a programme of events and supports lined up for you called **AIT Connect**.

This programme has been designed to help get you off to a flying start and make important connections with your new classmates, your lecturers and your supports in your first 7 weeks and beyond. Details will be available on social media and [www.ait.ie](http://www.ait.ie).



## Orientation & Guided Tours

*Free Stuff*

You will team up with classmates and a designated Lecturer who will give you essential course information and timetables. This is a great chance to get to know your way around and meet new people.



## Welcome Talk

At your Welcome Talk, you will meet the President or Registrar and your Head of Faculty and Department. At the end of this session you will join smaller groups for your Orientation and Guided Tour.



## Registration

You will register on-line, using your AIT Student ID number, before attending Induction. This number is available on your introduction letter. (starts with A..). **BRING THIS ID NUMBER WITH YOU** to Induction, record it on your phone! – you will need it to get your AIT Student Card.



## IT Session and Equal Access Survey

During your IT session you will get a password and be shown how to use the technical resources in AIT including the on-line academic support tool 'Moodle'. You will also complete an important on-line Equal Access Survey. This confidential survey is extremely important and its completion impacts on vital funding that we rely on to provide supports and services for our students.



## Meet the SU

*Free Stuff*

This is your chance to pick up your **FREE** Freshers Pack and Students' Union Handbook. You will meet your Students' Union representatives and hear about all the supports and services on offer plus all the events the Students' Union runs throughout the year!



## AIT International Gym

*Free Stuff*

Visit the state of the art gym and exercise studios in the AIT International Arena and enter a draw for a fabulous prize. Gym membership for two semesters is available for as little as €119.



## Banking

*Free Stuff*

Open your 3rd level student account with Bank of Ireland Athlone IT and get FREE rewards.



## Library Session

*Free Stuff*

This is where you will learn about valuable Library resources and how to find your way around. You will also be given a FREE USB key so don't miss out!

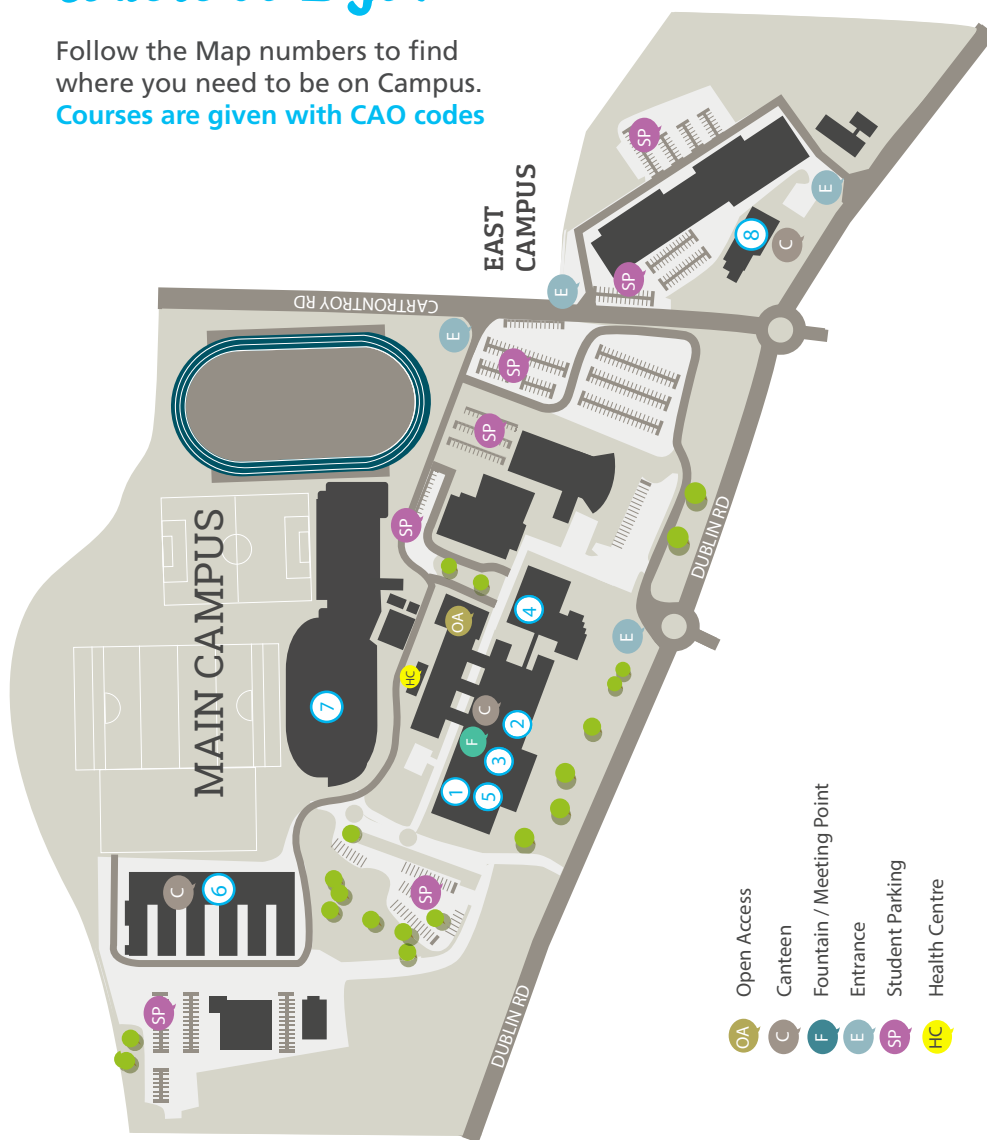
**Fresher's Week - 11th September \* Clubs & Societies Day - 14th September**

**FREE** visit to the gym or studio class for all 1st years (before 30th Sept).

# Where do I go?

Follow the Map numbers to find where you need to be on Campus.

Courses are given with CAO codes



## MAIN CAMPUS

① Library

② ID Card Centre

③ Douglas Hyde C1141  
*Welcome Talk*

④ Room B09/B10  
*Meet the S.U*

⑤ IT Labs (upstairs)

⑥ Engineering Building

⑦ International Arena

## EAST CAMPUS

⑧ Nursing and Health  
*Nursing Library*

- OA Open Access
- C Canteen
- F Fountain / Meeting Point
- E Entrance
- SP Student Parking
- HC Health Centre

## Group A

**AL632 – Higher Certificate in Science (Bioscience & Chemistry)**

Base Room E3203 – IT in Open Access

**AL730 – Bachelor of Science in Biotechnology**

Base Room E3205 – IT in Open Access

**AL838 – Bachelor of Science (Honours) in Biotechnology**

Base Room E3205 – IT in Open Access

**AL733 – Bachelor of Science in Forensic Toxicology**

Base Room D03 – IT in Open Access

**AL734 – Bachelor of Science in Pharmaceutical Science (Drug design & Development):**

Base Room D09 – IT in Open Access

**AL840 – Bachelor (Honours) in Pharmaceutical Science**

Base Room D09 – IT in Open Access

**AL842 – Bachelor of Science (Honours) in Bioveterinary Science**

Base Room E3201 – IT in Open Access

**AL731 – Bachelor of Science in Veterinary Nursing**

Base Room E3206 – IT in Open Access

**AL839 – Bachelor of Science (Honours) in Microbiology**

Base Room D02 – IT in Open Access

## Group B

**AL837 – Bachelor of Science (Honours) in Sports Science with Exercise Physiology**

Base Room D10 – IT in Open Access

**AL841 – Bachelor of Science (Honours) in Athletic & Rehabilitation Therapy**

Base Room B58 – IT in Open Access

**AL843 – Bachelor of Science (Honours) in Physical Activity & Health**

Base Room B59 – IT in Open Access

**AL630 – Higher Certificate in Science in Pharmacy Technician**

Base Room B57 – IT in Open Access

### Group A - Friday 8 September

Time	Location
8.30 – 10.00 ID Cards Issuing/Banking	ID Card Centre (Map No: 2)
10.00 – 11.00 Welcome/School Talk	Douglas Hyde Theatre (Map No. 3)
11.00 – 12.00 Guided Tour	Base Room
12.00 – 1.00 Break	Canteen
1.00 – 2.00 Library Tour	Library (Map No.1)
2.00 – 3.00 IT Session	Open Access (Map No. OA)
3.00 – 4.00 Meet the SU	Room B09/B10
4.00 – 4.30 ID Cards Issuing/ Banking	ID Card Centre (Map No. 2) (only for Students who have not got their ID Card)

### Group B - Friday 8 September

Time	Location
10.00 – 11.00 Welcome/School Talk	Douglas Hyde Theatre (Map No. 3)
11.00 – 12.00 Guided Tour	Base Room
12.00 – 1.00 ID Cards Issuing/Banking	ID Card Centre (Map No: 2)
1.00 – 2.00 IT Session	Open Access (Map No. OA)
2.00 – 3.00 Break	Canteen
3.00 – 4.00 Library Tour	Library (Map No.1)
4.00 – 5.00 Meet the SU	Room B09/B10

## Group C

**AL830 & AL831 Bachelor of Science (Honours) in General Nursing**

Base Room E3210 – IT in Open Access

**AL832 & AL833 – Bachelor of Science (Honours) in Psychiatric Nursing**

Base Room B53 – IT in Open Access

**AL836 – Bachelor of Science (Honours) in Health Science with Nutrition**

Base Room B54 – IT in Open Access

**AL631 – Higher Certificate in Dental Nursing**

Base Room E3207 – IT in Open Access

## Group D

**AL765 - Bachelor of Arts in Applied Social Studies in Social Care**

Base Room E3209 – IT in Open Access

**AL860 – Bachelor of Arts (Honours) in Social Care Practice**

Base Room B08 – IT in Open Access

**AL764 – Bachelor of Arts in Early Years Care & Education**

Base Room E3208 – IT in Open Access

**AL763 – Bachelor of Arts in Graphic Design**

Base Room B55 – IT in Open Access

**AL861 – Bachelor of Arts (Honours) in Animation & Illustration**

Base Room E3203 – IT in Open Access

### Group C - Friday 8 September

Time	Location
9.00 – 10.00 Welcome/School Talk	Douglas Hyde Theatre (Map No. 3)
10.00 – 11.00 Guided Tour	Base Room
11.00 – 12.00 Meet the SU	Room B09/B10
12.00 - 1.00 IT Session	Open Access (Map No. OA)
1.00 – 2.00 Break	Canteen
2.00 - 3.00 Library Tour	Nursing Library (Map No. 8)
3.00 – 4.30 ID Cards Issuing/ Banking	ID Card Centre (Map No. 2)

### Group D - Friday 8 September

Time	Location
9.00 – 10.00 Welcome/School Talk	Douglas Hyde Theatre (Map No. 3)
10.00 – 11.00 Guided Tour	Base Room
11.00 – 12.30 Library Tour	Library (Map No. 1)
12.30 – 1.00 Break	Canteen
1.00 – 2.00 Meet the SU	Room B09/B10
2.00 – 3.00 ID Cards Issuing/ Banking	ID Card Centre (Map No. 2)
3.00 - 4.00 IT Session	Open Access (Map No. OA)
4.00 – 4.30 ID Cards Issuing/ Banking	ID Card Centre (Map No. 2) (only for Students who have not got their ID Card)